

JUNE 2022

ADOLESCENT PROGRAM MARGARET RIVER MONTESSORI HIGH SCHOOL

A Newsletter for Prospective Families

4/6 Clarke Road, Margaret River Ph 08 9757 2564



Welcome! Kaya!

We would like to welcome you and express our gratitude for your interest in our much anticipated Montessori Adolescent Program in Margaret River. This is the first of, we hope, many interactions in this exciting journey of quality secondary education. Read on to find out more about our plans for the first Montessori high school in the Southwest.

Lisa Fenton (MRMS Principal)



OVERVIEW:

- [The Montessori Philosophy](#)
- [Our Mission and Vision](#)
- [Project Update](#)
- [Building Project and Timeline](#)
- [Enrolment Process](#)
- [Your Legacy](#)
- [Questions and Answers](#)
- [Contact Us](#)

This newsletter is designed to provide an update to families who are interested to know more about the development of a new high school in Margaret River. If you require further information, please contact the MRMS Office on 9757 2564 or email us at montessori@margmont.wa.edu.au

The Montessori Philosophy and what our School will offer

Margaret River Montessori School's central philosophy is to '**prepare our students for life**'. In line with the school's mission to prepare adolescents for adulthood and the real world, the new high school will immerse our students in purposeful learning by 'employing' **the local community as a 'teacher'** and linking with local organisations to provide students with real life experts and industry experience from a range of fields. Partnering with individuals and businesses within the region will supplement special programs and projects while supporting the plans to start with the provision of two teachers/guides to cover face to face learning for core subject areas.

We believe students will greatly benefit from this **multi-dimensional approach** to learning and the opportunities for mentoring, experiential learning and development of intergenerational relationships. We thus aim at creating the right learning environment where adolescents can develop a **sense of belonging** and feel safe.

Harnessing local skills within our area, for example, teaching students environmental studies by immersing them within the abundant tapestry of real-life forests, beaches, and wetlands that Margaret River has to offer, or utilising the many talented local artists to **extend the students' knowledge** of art and craft, will engage our students in really exciting opportunities and meaningful learning. Maria Montessori's philosophy referred to the adolescent years as a time for 'social mission', meaning that individuals are eager to understand humanity and **learn from and about one another** to discover what it takes to maintain thriving social relationships and develop an understanding of the contribution they can make to society.

In addition to strong community involvement, other key features of the progressive school include teacher-student collaboration in integrated inquiry project style learning, multi-age groupings to encourage opportunities for peer learning and teaching, an open plan Montessori learning environment with **uninterrupted work cycles and flexible break times**, access to the outdoors and range of assessment options and conditions will be provided for students. There will be a focus on explicit teaching and application of soft skills – problem solving, growth mindset, creativity, critical thinking, solutions finding, innovation and independence.



“ Maria Montessori

“Above all it is the education of adolescents that is important, because adolescence is the time when the child enters on the state of manhood [adulthood] and becomes a member of society.”

(Maria Montessori, From Childhood to Adolescence)

The Montessori Philosophy and what our School will offer cont.

The essential goal of the proposed Adolescent Program is to provide a secondary education for students in the Margaret River area and surrounds that is broad and holistic in nature, catering to the developmental needs of **the whole adolescent**, physically, intellectually, emotionally, spiritually and socially.

A key feature of any Montessori high school curriculum is **entrepreneurship** and MRMS plans for the students to begin their own small business, in this way incorporating subjects such as economics, mathematics, accountancy, agriculture and/or animal studies to foster initiative, individual responsibility and group cooperation, thereby reinforcing the school's mission of preparing adolescents for adulthood in the real world.

We aim to provide an **inspiring, nurturing, collaborative and meaningful** educational program and environment that will encourage **compassion, independence, initiative and self-discipline** and successfully prepare the students to take on their part in life's ultimate aim – to create a better world.



The academic program will be based on the National Montessori Curriculum for ages 12-15 (and later 15-18) and will be aligned to the WA K-10 Curriculum and Assessment Outline, as already approved by the School Curriculum and Standards Authority (SCSA). We have submitted the second of a 4 part government process to register our school to teach Year 7, 8 and 9 as of 2023. We will follow up with the process for Yrs 10, 11 and 12 the following year.

Students beginning in 2023 will have access to both **vocational and university pathways** when they reach Year 11 and 12 as the school grows.

Western Australia has the nation's highest number of Montessori secondary programs and MRMS's Adolescent Program runs off the back of the success of WA's other Montessori secondary programs.



The Adolescent Program will have a strong influence on the child's personal growth in the areas of public speaking, the arts, sports, business, economics, entrepreneurship, environmental studies, out of school activities and work readiness skills.

The Adolescent Program will incorporate internships to ensure students gain real life experiences to guide their future career pathways.

Areas of study include: English, Mathematics, Science, Humanities, Physical Expression, Languages, The Arts, Social Justice, Micro Economy, Environmental Studies.

Our Mission & Vision

The Whole Person, Adolescence, and Interconnectedness

Our Mission - To provide a quality, innovative Montessori education in a safe, respectful and nurturing environment. Our child-centred, individualised approach motivates young people to be: engaged in the joy of life-long learning; inspired with a desire to be independent and achieve their best; filled with self-belief, acceptance of differences and willingness to contribute meaningfully to their community and the world.

Our Vision - To raise the next generation of thinkers - strong academically, creative, imaginative and confident in their abilities; aware, conscious of the environment and their place in a global world; spirited, with an understanding of themselves, their self-worth and the joys of kindness and friendship, with unbridled energy and a thirst for learning to last a lifetime.

We also work under the five pillars of:

- Reaching our full academic potential
- Nurturing the mind and spirit
- Developing the physical self
- Focusing on self-direction and intrinsic motivation
- Becoming a creative and independent thinker.



As well as being inextricably connected with Montessori Philosophy, our Vision and Mission as well as our Statement of Philosophy are underpinned by the Educational Goals for Young Australians of the Alice Springs (Mparntwe) Education Declaration (Education Council 2019).

Goal 1: The Australian education system promotes excellence and equity .

Goal 2: All young Australians become confident and creative individuals, successful lifelong learners, and active and informed members of the community .



“**Maria Montessori**

"Let us give the child a vision for the whole universe...for all things are part of the universe, and are connected with each other to form one whole unity.

We shall walk together on this path of life, for all things are part of the universe, and are connected with each other to form one whole community. "

Margaret River Montessori School has redefined our **Vision and Mission Statements**. Please take a minute to read and absorb these powerful messages:

our vision >

To raise the next generation of **thinkers** - strong academically, creative, imaginative and confident in their abilities; **aware**, conscious of the environment and their place in a global world; **spirited**, with an understanding of themselves, their self-worth and the joys of **kindness** and **friendship**, with unbridled energy and a **thirst for learning** to last a lifetime.

To provide a quality, innovative **Montessori** education in a **safe**, respectful and nurturing environment. Our child-centred, **individualised** approach motivates young people to be: engaged in the joy of play and life-long learning; inspired with a desire to be **independent** and achieve their best; filled with self-belief, acceptance of differences and willingness to contribute meaningfully to their **community**.

We have also established these **Five Outcome Pillars** that will help our students for life.

There is also more information about this available on our website.

< our mission



Our Vision, Mission & Strategic Plan



Strategic Plan 2020—2023 Interconnectedness



Margaret River Montessori School

**EDUCATION IN
HARMONY WITH LIFE**

The Margaret River Montessori School Council presents the Strategic Plan 2020-2023's overarching driving concept:

INTERCONNECTEDNESS

The child is endowed with unknown powers, which can guide us to a radiant future. If what we really want is a new world, then education must take as its aim the development of these hidden possibilities."

Maria Montessori, *The Absorbent Mind*



This plan borrows extensively from Dr Montessori's globalist view that every aspect of life is interconnected and it is in recognising and harnessing the power of that collective strength that we enable our children to truly achieve that "radiant future."



Project Update

The Adolescent Program Journey

The current Margaret River Montessori Adolescent Program Committee was established in October 2020.

It is an eclectic group of passionate MRMS parents who aspire to create a local high school that offers a first- class alternative to the mainstream schooling structure and system.

For just about two years, these local parents, principal, teachers, architects, designers, deep sea divers, engineers, artisans, accountants, and business owners have rolled up their sleeves, collaborated with community, and after numerous meetings, consultations, and discussions, have designed a new local high school.

The committee functions under the direction of the school board and within the framework of our school's [Strategic Plan](#).

Truly, "great things are done by a series of small things brought together", (Vincent Van Gogh). This has indeed been our journey so far.



Margaret River Montessori School had its humble beginnings back in 1993. As 2023 is our school's 30th birthday, there couldn't be a more fitting time to open our first high school class and progress further on our journey of providing an education for life.

Meet our Adolescent Program Committee!

Lisa Fenton; Richard Bradley; Denise and Jason Leppard; Steph Longmore-Dodd; Asti Jorgensen; Stephen Bebbington; Rae Pethica; Emma St Clair; Shannon George; Lindsey Cowen; Tori Franks; David Lasserre; Darryl Black; Elizabeth Henderson



Maria Montessori

"The need that is so keenly felt for a reform of secondary schools is not only an educational but also a human and social problem. This can be summed up in one sentence: Schools as they are today are adapted neither to the needs of adolescence nor to the time in which we live."

Project Update

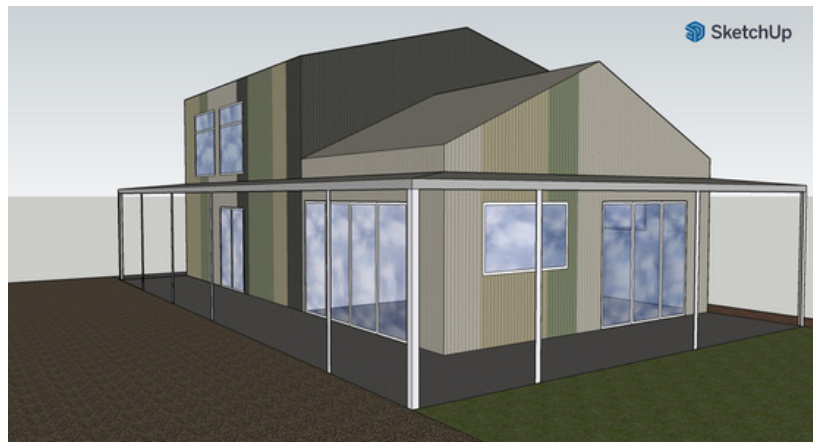
The construction of our first classroom

We are pleased to announce that the **Stage 1 New Montessori High School Building** is set to start this year with an exciting innovative and 21st century environmental design.

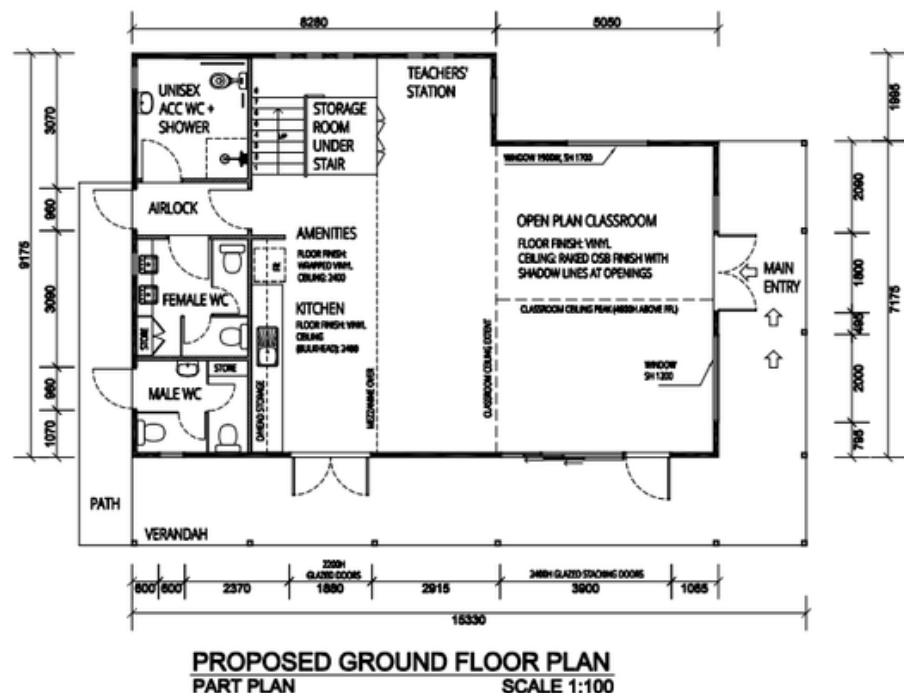
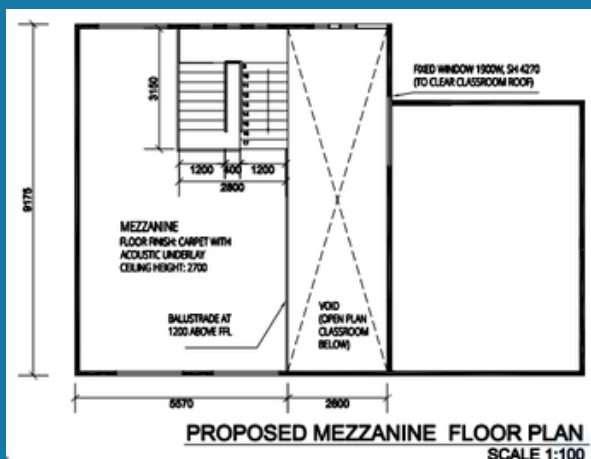
Our first classroom, "The Hub", has recently been awarded to Logan Construction. This exciting project will provide the High School with a "shed like" classroom, a mezzanine, digital design, amenities and classroom kitchen spaces.

Downstairs will be the home space for all teaching and instruction. The mezzanine will be an optional quiet working space and will also house the library and resources sections.

It is located behind the current Montessori Primary School, adjacent to the beautiful wetlands on Clarke Road. Students will have access to natural settings and walking access to other resources like the Margaret River Recreation Centre and Sporting Fields and the Margaret River Regional Environment Centre's Community Gardens.



First look at our design



Project Timeline

(May be subject to modifications)

- Term 2, 2022. Submitted Development Approval (DA) to the Margaret River Shire (60-90 days).
- Term 2, 2022. Finalised Stage 2 of WA Education Dept. School Registration process.
- Term 2, 2022. Recruitment process engaged for two new teachers/guides.
- Term 3, 2022. Commencement of build off-site of the first classroom "The Hub".
- Term 3, 2022. Enrolment process and interviews.
- Term 3/4, 2022. New teachers begin planning and connecting with possible future mentors.
- Term 3/4, 2022. A parent-teacher-community conference.
- Term 4 2022. Delivery of pre-fabricated shed structure to site and commencement of on-site works.
- Term 4 Orientation Visits and Transition for enrolled students.
- **Term 1, 2023. Start of our first High School cohort!**
- Ongoing: STAGE 2 (source other land/site options)



Your Legacy

The Margaret River Montessori School Board has submitted a planning proposal to the state government which has now been approved. They are now seeking expressions of interest from the community for support of this program and invite community members and organisations to email montessori@margmont.wa.edu.au to register your interest to make a contribution to this amazing community project.

Tax deductible donations can be made by contacting our Office.



“ Maria Montessori

"An education capable of saving humanity is no small undertaking: it involves the spiritual development of man, the enhancement of his value as an individual, and the preparation of young people to the times in which they live."

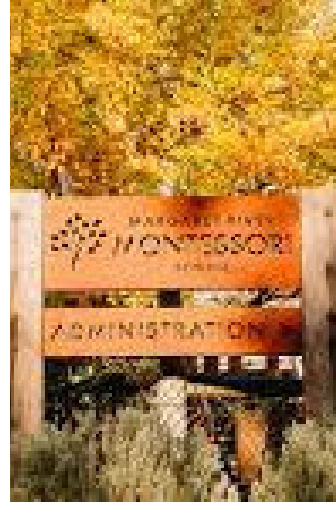
If what we really want is a new world, then education must take as its aim the development of these hidden possibilities."

Enrolments

What is the Montessori enrolment process?

Families should follow the following process if they are interested in our school:

1. Submit an enquiry (via our website enquiry form, phone or email). Your enquiry will be attended to and you will be added to our Enquiry Database.
2. You can skip Step 1 and go straight to Step 2 which is to submit an Application for Enrolment which is accompanied by a \$150 administration fee (non-refundable).
3. Step 2 puts you on our waitlist to be placed but is not a guarantee of a place.
4. As per our Enrolment Policy students who graduate from Year 6 in our Primary School will be offered priority placements. Placements also work around maintaining a balance of students age, gender, needs and interests. Other factors influencing placement include transitioning from another Montessori school or connection to our school. Families applying to enrol from non-Montessori primary schools will have opportunity to provide their reasons for applying via the application process in Step 2.
5. Preliminary Enrolment Interviews take place following the above steps.
6. Letters of Offer and Welcome Packs are provided when a student can be placed.
7. Students and families are then guided through an Orientation Process before starting.



An education for Life

As enrolments from existing Margaret River Montessori School students and students from other Montessori schools will be prioritised, and because waitlists are currently in place for all classes in the primary school, Applications for Enrolment for the primary school are welcomed from birth.

Contact Us

Office Administration, Enrolment Enquiries, Donations

P 08 9757 2564

E (enrolments) montessori@margmont.wa.edu.au

E (donations) montessori@margmont.wa.edu.au

W www.margmont.wa.edu.au

F www.facebook.com/margaretrivermontessori/

I www.instagram.com/margaretrivermontessorischool/



Questions and Answers

What will the costs be?

Fees are projected to be within the range of \$8000 to \$10,000 per year and will be invoiced each term. Camps and some excursions will incur an extra cost. Application and Administration fees may also apply. A fee schedule will be released within the coming months.

How many students can this classroom provide for?

The first class will be a multi age class of about 25 students from Year 7, 8 and 9. There will be 2 main full time class teachers for those students plus EAs as needed and Specialist teachers for Music, Art, Phys Ed, Languages, etc.

Will the high school eventually open a Year 10, 11, 12 stream?

Yes. The first cohort of Year 9s in 2023 will become Year 10s in 2024 and so on up to Year 11 and 12. Students will have access to vocational courses through TAFE and university entrance through Enabling Courses.

Will students be able to enter university or other tertiary options?

We will provide options for post school tertiary pathways including university through access to portfolio entry, university enabling courses and STAT test university entry as well as support to engage with TAFE.

The vast majority of Montessori schools serve younger kids. What did Maria Montessori say about teens?

In an essay called "Erdkinder," or Earth Child, Montessori states that adolescents need to go out beyond the classroom and have experiences where they learn to be self-sufficient. How we interpret this, is we get students to interact off campus and connect with community, environment, and real-life projects.

What sets the academics apart from a traditional high school?

In a Montessori setting, we cater for the children's different needs, interests and skill levels. We want them to thrive and be passionate about learning and life. To do so, we focus on cross-curricular connections through our "cycle of study" themes. We look beyond traditional student achievement and apply a holistic measure of excellence. Importantly, we want the students to raise their self-esteem and feel empowered when it will be time to enter the big wide world.

On a day-to-day level, each student has a unique work plan that requires them to plan and prioritise how they'll meet the objective. Students work in uninterrupted, independent blocks, allowing them to engage with their work, collaborate with others, or participate in small group instruction.

If you have more questions please phone our Office Administration on 9757 2564 or email on montessori@margmont.wa.edu.au



Maria Montessori

"Within the child lies the fate of the future."