



**Margaret River
Montessori**
SCHOOL | EST 1993

Bush Babes

Playgroup Information Guide





What is Bush Babes?

Bush Babes Playgroup is the beginning of the Montessori journey at Margaret River Montessori School. Designed for children aged 0–3 years, the program provides a gentle introduction to Montessori principles within a calm, supportive environment where children and families learn and play together. Our playgroup offers opportunities for young children to explore independence, movement, language and connection with nature while parents gain a deeper understanding of the Montessori approach. For many families, Bush Babes becomes the first step in their child's educational journey with our school.

Session Times

9:00am to 11:00am
Tuesday or Wednesday

Term Dates

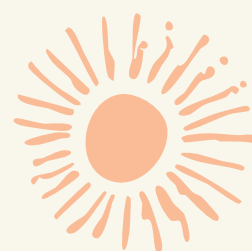
Please see the Primary School Term Dates on our website

Location

Margaret River Montessori School: 4-6 Clarke Road
Margaret River

Fees

Please see the current fee Schedule on our website





Early Learning *Cultivating Curiosity*

It has been widely researched that the earliest years of a child's life are the most influential in brain development.

Dr Maria Montessori observed that during these years children learn instinctively from their environment, absorbing information unconsciously as they form their sense of identity and culture. She referred to this stage of development as The Absorbent Mind.

When a child's environment is calm, ordered and cooperative it naturally supports learning and nurtures intellectual, physical and social-emotional development.

Bush Babes aims to create an environment where children feel secure, capable and curious about the world around them.





Montessori Basics

Key Principles:

- Respect for the child
- Independence and self-motivation
- Learning through purposeful activity
- Development at the child's natural pace

Montessori education focuses on helping children reach their full potential in all areas of life, encouraging growth at each child's own pace.

The Montessori approach is child-centred but adult guided, within a carefully prepared environment that allows freedom within clear boundaries.

Montessori materials are designed with a built-in control of error, allowing children to recognise and correct mistakes independently. This encourages persistence, confidence and intrinsic motivation.





The 0-3 years Program

Our Bush Babes program provides a holistic early learning environment where children and families can experience the joy of discovery together.

The indoor and outdoor environments reflect order, beauty and simplicity, allowing children to explore materials with minimal adult assistance.

Parents are supported in understanding Montessori principles such as:

- allowing children to complete tasks independently
- respecting concentration
- encouraging repetition and mastery
- creating calm, ordered environments at home

Through consistent routines and shared experiences, the program nurtures a natural love of learning and growing independence.

Our time together also fosters connection — with ourselves, with each other, and with the natural environment around us.



What makes Bush Babes unique?



Whole Child Approach

Understanding each child's individual human needs and tendencies

Nature & Community Focus

Encouraging interaction with others while fostering respect for community, people and the environment around us.

Facilitating Growth

Facilitating the child's growing need for independence, order, self-discipline, movement and language

Skill Development

Activities to promote development of social skills, emotional growth and physical coordination as well as cognitive preparation

Bush Babes differs from many mainstream playgroups because it is intentionally structured around Montessori principles.

Children are encouraged to participate with minimal adult intervention, allowing them to explore, repeat and master activities independently. This builds concentration, confidence and a sense of accomplishment.

A trained Program Facilitator carefully prepares the environment, observing children and providing guidance when needed.



Playgroup Activities



Language Enrichment

Literacy begins before birth. Talking and reading to are the first steps. Activities include sound awareness games, a library corner, group sing-a-longs and story time

Practical Life

Activities we do every day in caring for ourselves and our home. It also includes the social graces and courtesies we extend in maintaining harmonious social relations. For example: sweeping, pouring, washing dishes, using 'manners' and sharing

Sensorial Development

Activities to assist in awakening in the mind to the stimuli that are received through the senses and organising and labelling them. For example: smelling jars, weight cylinders, mystery bag

Mathematical Concepts

Early concrete mathematical concepts are introduced in the form of puzzles, blocks and counting activities

Visual Discrimination

Visual discrimination activities allow the child to communicate and discriminate using their senses

Art and Culture

Art and craft, music and dance, exploration of the earth, its people, plants and animals, as well as activities that support fine and gross motor development.

Hand-eye Coordination

Exercises to refine hand-eye coordination through use of puzzles and specific materials in the room





How do we start?



Important Information

Bush Babes Playgroup is designed for children from birth up to 3 years of age and participation is offered on a term-by-term basis until the child's 3rd Birthday.

By enrolling in Bush Babes, families acknowledge that:

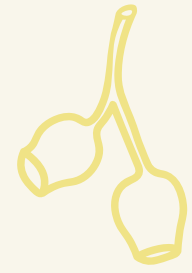
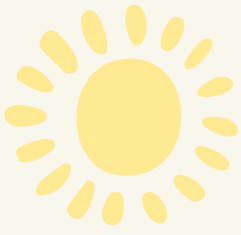
- Parents or caregivers remain responsible for the supervision of their child at all times.
- Bush Babes is a parent-accompanied program.
- Playgroup fees are payable per term and in advance.
- Fees are not refundable once the term has commenced.
- Fees are not subsidised or discounted under any circumstances, including partial attendance, late commencement or mid-term withdrawal.
- Bush Babes is an Allergy Aware Program.
- Participation in Bush Babes does not guarantee admission to Margaret River Montessori School.

Bush Babes is a parent-accompanied program where children attend alongside a parent or caregiver.

During sessions, parents remain responsible for supervising their child while also supporting their growing independence within the Montessori environment. This shared experience provides families with valuable insights into Montessori principles and practical approaches that can also be applied at home.

Applications are submitted with the understanding that families have read and acknowledged this document, along with the School's current Fee Schedule and relevant policies.





Applications & Waitlist

To enrol your child in Bush Babes Playgroup, please complete the Bush Babes Application Form. Please note that submitting this form is an application to join the waitlist and does not guarantee placement in the program. Children will be offered entry should a place become available.

Once an application is received, your child will be added to the Bush Babes waitlist. Families will be contacted prior to the start of term if a place becomes available. If a place is not available, your child will remain on the waitlist for possible admission in a future term where applicable.

When reviewing placement availability, current families are first asked whether they wish to re-enrol for the following term. Families with children ageing out of the program are then farewelled, and any remaining places are offered to families on the waitlist. If current families do not confirm their intention to continue within the advised timeframe, their child's place may be forfeited and offered to another family, and they may be returned to the waitlist for future terms.

When offering places in Bush Babes, the School may give consideration to families who have submitted a formal Application for Enrolment for Primary School. A range of factors are considered when making placement decisions. Further information on our enrolment criteria and placement considerations can be found in our *Enrolments Guide: Application to Admission*.

Admission

If a place becomes available and is offered, families will be asked to complete and return the required documentation prior to their child's first session.

This may include:

- Admission forms
- Emergency contact information
- Any required supporting documentation

Families will also receive an invoice for the Playgroup Term Fee, payable via bank transfer or through the Primary School Front Office (either in person or over the phone). Your child's place is confirmed once the required documentation has been returned and the term fee has been paid. Please note that if these requirements are not completed within the specified timeframe, the place may be forfeited and offered to another family, and your child returned to the waitlist.

Our Playgroup Facilitator will send a welcome letter via email introducing the program and outlining session expectations and what to bring. This is typically sent in the week prior to the commencement of term.



Children Turning 3 within the Term

Bush Babes is a 0–3 program designed in accordance with the Montessori Method for children in the first stage of development.

Children who will turn 3 years of age during an upcoming term will generally not be offered a place for that term, as younger children within the 0–3 age range may already be waiting for entry.

In rare extenuating circumstances, and at the discretion of the Principal, a child who turns 3 during the term may be offered a place and permitted to attend until their third birthday, after which they will conclude their participation in the program. Any such arrangement would be by invitation only.

Bush Babes and the Montessori Journey to Primary School

Bush Babes provides families with an opportunity to begin experiencing the Montessori philosophy before school age.

Participation in Bush Babes can help prepare children for the Junior Primary environment, however it does not automatically guarantee or secure a place in the school program.

Families wishing to continue their Montessori journey at Margaret River Montessori School must submit a formal Application for the Primary School.

Communication & Contact Points

To help ensure your queries are directed to the appropriate person, please refer to the following points of contact.

Enrolments Officer

The Enrolments Officer manages the Bush Babes process from initial enquiry through to application, admission, and term re-enrolment. This includes enquiries about Bush Babes and the enrolment process, applications and waitlist enquiries, placement availability, admission documentation and fees, as well as questions relating to the Primary School and the Junior Primary enrolment pathway. The Enrolments Officer is available Monday to Friday during school hours. If you are unsure who to contact, please reach out to the Enrolments Officer in the first instance and your enquiry will be directed accordingly.

Playgroup Facilitator

The Playgroup Facilitator manages the day-to-day running of the Bush Babes sessions, including session activities, program information, and the general rhythm of the playgroup environment. They are the best point of contact for questions relating to session expectations, what to bring to playgroup, weekly routines, and general participation in the program. The Playgroup Facilitator is typically available during Bush Babes session days (Tuesday and Wednesday). Families will also receive a welcome email from the Playgroup Facilitator prior to the start of term, outlining session expectations and helpful information to prepare for the program.



We look forward to welcoming you



We're here to help

Please Ask

If you have any questions about Montessori or the enrolment process, we warmly invite you to contact the Enrolments Officer. You are welcome to call, email, visit the Margaret River Campus or arrange a time to meet.



enrolments@margmont.wa.edu.au



08 9757 2564



4-6 Clarke Road, Margaret River
WA 6285



**Margaret River
Montessori**
SCHOOL | EST 1993

(08) 9757 2564 · montessori@margmont.wa.edu.au
4-6 Clarke Road, Margaret River, Western Australia 6285
www.margmont.wa.edu.au

Education in harmony with life

